

What kinds of questions does the electronic diary ask?

~The diary will ask where you are, who you are with, what you are doing, your mood, your interactions with your child, your diet, etc. You will answer the questions using a checklist; no writing is necessary. You and your child will complete the same checklists independently using your own separate handheld computers.

Does my child have to have ADHD to be in this study?

~No, this study is open to families whose children are taking prescribed medication for ADHD or related attention difficulties **AND** to children with no ADHD symptoms or attention difficulties.

When will the orientation session and electronic diary days occur?

~This will be up to you. We will ask you to choose the best day and time for the orientation session and the most convenient week for the electronic diary phase.

For further information:

Call Palmtop Partners
(949) 824-9661
(or send an e-mail to
palmtop@uci.edu)



Study Directors:

Carol Whalen, Ph.D.

UC Irvine Department of
Psychology & Social Behavior

Barbara Henker, Ph.D.

UCLA Department of Psychology

Larry D. Jamner, Ph.D.

UC Irvine Department of
Psychology & Social Behavior

UCI IRB HS# 2002-2682

The UC Irvine Department of Psychology & Social Behavior

Is Looking for Volunteers for
a Research Study on

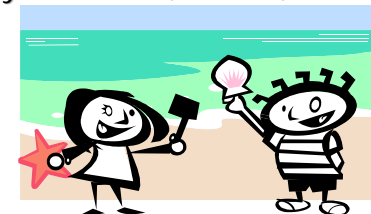
PARENT & CHILD DAILY ACTIVITIES, MOODS, & STRESS

Are you the parent of a healthy son
or daughter ages 8-12?

OR

Are you the parent of a son or
daughter who is taking medication
for ADHD or
attention/concentration problems?

If so, you could earn up to \$200 by
participating in a one-week study of
family activities, moods, and stress.



What will I be asked to do?

- Attend an orientation session with your child and complete some questionnaires about your daily life, personality, and stress levels. You will be introduced to and have a chance to practice with our project equipment--handheld (palmtop) computers. All of your questions about this study will be answered. The session will take about 1½ hours for your child and about 3 hours for you. It will take place either at your home or on the UC Irvine campus, whichever is more convenient for you.
- You and your child will separately fill out a 1 to 1½-minute electronic checklist on a palmtop computer approximately every half hour for 5 weekdays before and after school and during 2 weekend days.
- Your child will wear an activity monitor (similar to a wrist watch) during the days checklists are completed as he/she goes about his/her normal daily activities.

Frequently Asked Questions

How will information from this study be used?

~The information you provide us with will be used to increase our understanding of the daily lives of families. This information may be useful in developing programs to decrease parenting stress and enhance the quality of family life.

Will my son/daughter share his/her answers to the checklists with me?

~No, you will not see your child's responses, nor will your child see yours. Confidentiality is of prime importance in this study. Once your answers are entered into the computer, they can be read only by our project staff. No one but the researchers will have access to your data, and even then, your name will NOT be connected with the data. Instead, your information will be identified by a special code.

How will I be paid?

~You and your child will each be paid \$10 for each weekday you complete the electronic checklist and \$25 for each weekend day for a total of up to \$200. You'll also be entered into a drawing for 2 Palm Tungsten-T handheld computers, and bonus prizes may be earned as well.

Will the palmtop electronic diary interfere with planned activities, schoolwork, or special events?

~This study encourages you and your child to go about your normal activities and routines each day. During the weekdays, the checklist will activate before and after school so it will not interfere with your child's school hours. During the weekends, the diary will signal you and your child during your waking hours. If the diary signals during a special event or incompatible activity (such as driving, soccer game, bicycling) you will not be expected to respond. It typically takes 60-90 seconds to complete each checklist.